



**/herculesgomesofficial**



**/herculesgomesofficial**



**/herculesgomesofficial**

# PIANEIROS

- . CHIQUINHA GONZAGA
- . ERNESTO NAZARETH
- . AURÉLIO CAVALCANTI
- . TIA AMÉLIA
- . RADAMÉS GNATTALI
- . CAROLINA CARDOSO DE MENEZES
- . GAÓ
- . EDUARDO SOUTO
- . NONÔ
- . MARCELLO TUPYNAMBÁ
- . BENÉ NUNES
- . LINA PESCE
- . ZEQUINHA DE ABREU...

- . LAÉRCIO DE FREITAS
- . CRISTÓVÃO BASTOS
- . MARCO ANTÔNIO BERNARDO

# LIVROS E SITES

**. CHORO DO QUINTAL AO MUNICIPAL**

(HENRIQUE CAZES)

**. COMO É BOM PODER TOCAR UM INSTRUMENTO**

(ROBERVALDO LINHARES ROSA)

**. [www.ernestonazareth150anos.com.br](http://www.ernestonazareth150anos.com.br)**

**. [www.chiquinhagonzaga.com/acervo](http://www.chiquinhagonzaga.com/acervo)**

**. [www.casadochoro.com.br](http://www.casadochoro.com.br)**

# CHORO

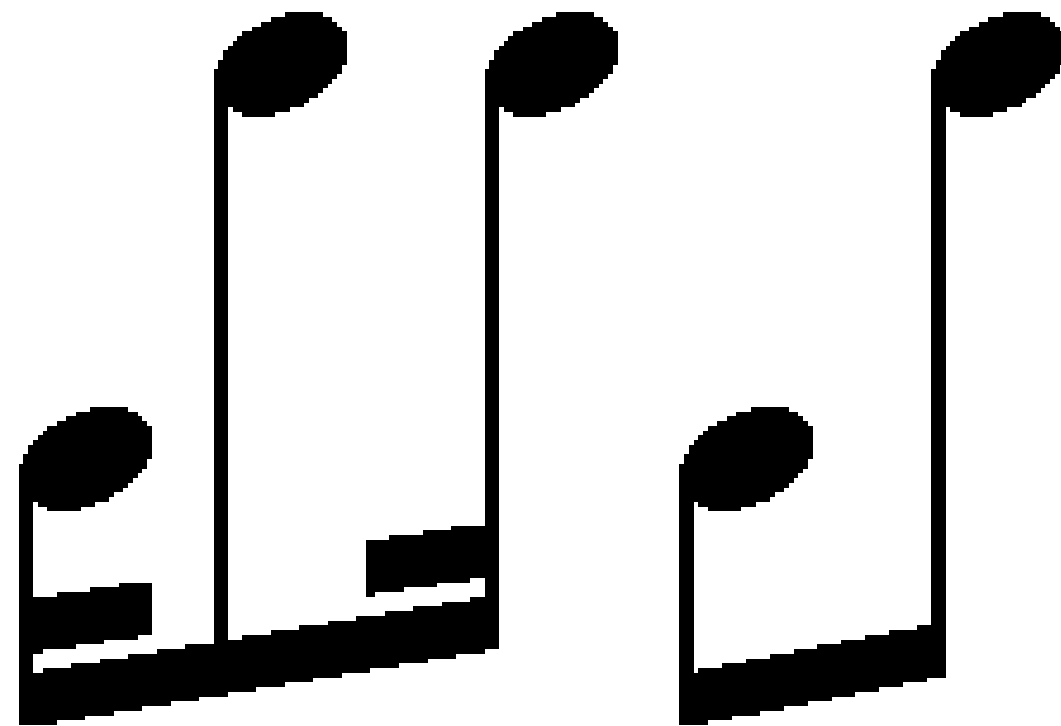
## SUBGÊNEROS:

- . MAXIXE
- . CHORO
- . POLCA
- . VALSA
- . SAMBA CHORO
- . CHORO CANÇÃO
- . LUNDU
- . SCOTTISH

# MAXIXE

acorde

2  
4

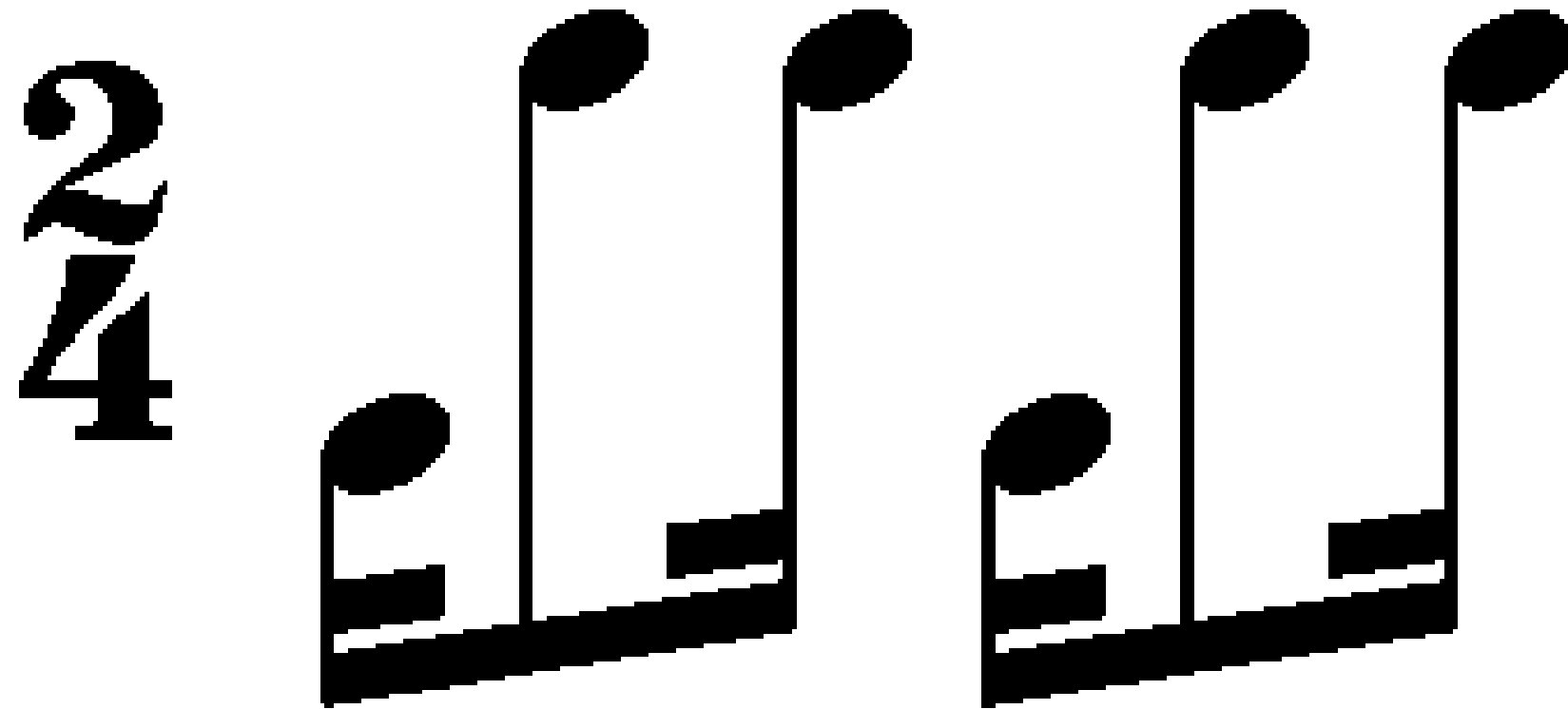


baixo

# CHORO

padrão 1

acorde



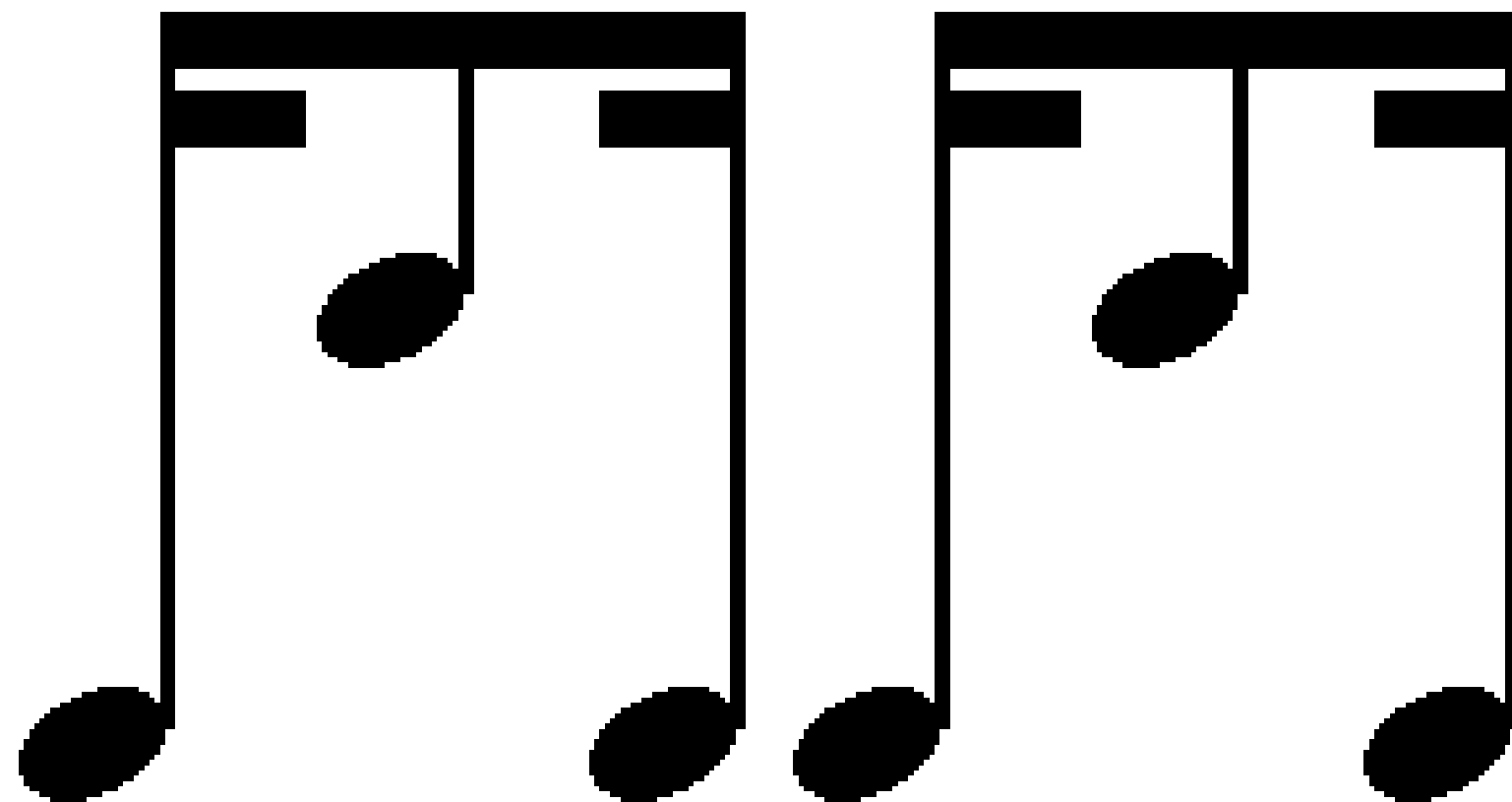
baixo

# CHORO

variação 1

acorde

2  
4



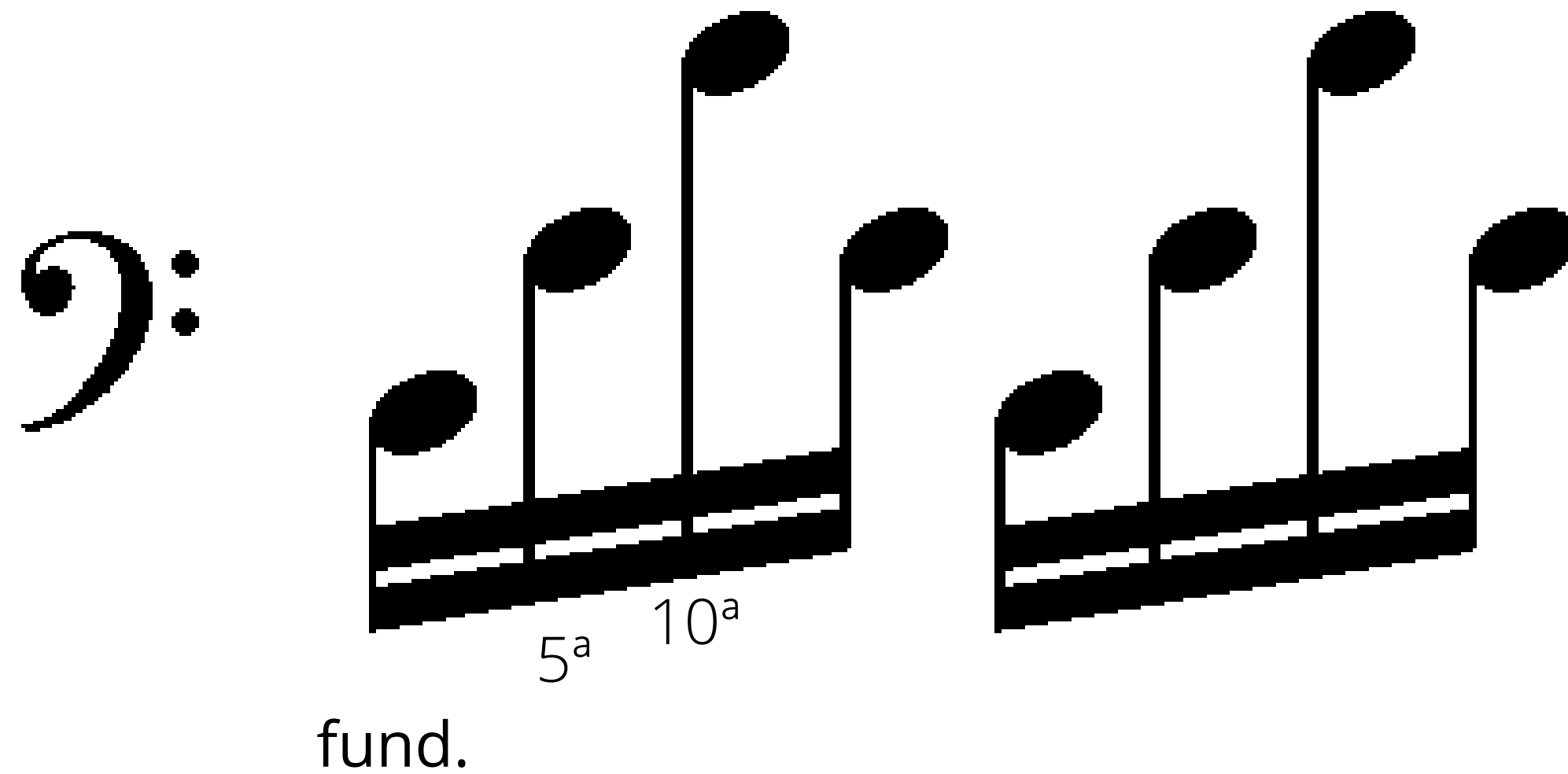
baixo

baixo

baixo  
seguinte

# CHORO

padrão 2





# CHORO SAMBADO

padrão 1

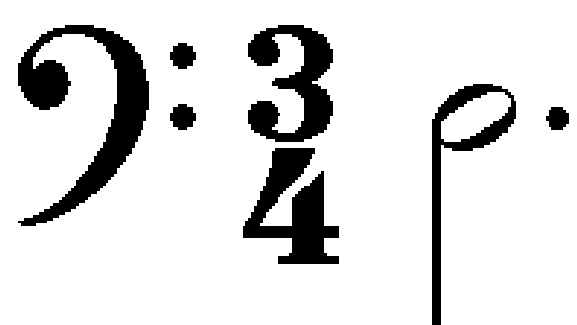
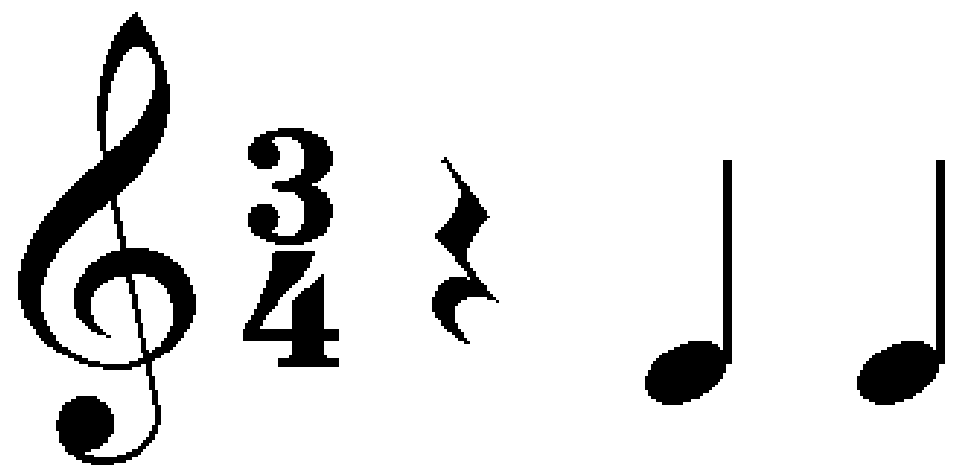
The image displays the musical notation for the first pattern of 'Choro Sambado'. It consists of two staves. The top staff is in treble clef with a 2/4 time signature. It begins with a treble clef symbol, followed by the time signature '2/4', and then a key signature signature of one sharp (F#). The melody consists of the following notes: a quarter note G4, an eighth note A4, an eighth note B4, a quarter note C5, a quarter note B4, a quarter note A4, and a quarter note G4. The bottom staff is in bass clef with a 2/4 time signature. It begins with a bass clef symbol, followed by the time signature '2/4'. The bass line consists of the following notes: a quarter note G2, a quarter note A2, a quarter note B2, and a quarter note C3. A vertical bar line is placed between the two staves, aligning with the end of the first measure of the treble staff.

# CHORO SAMBADO

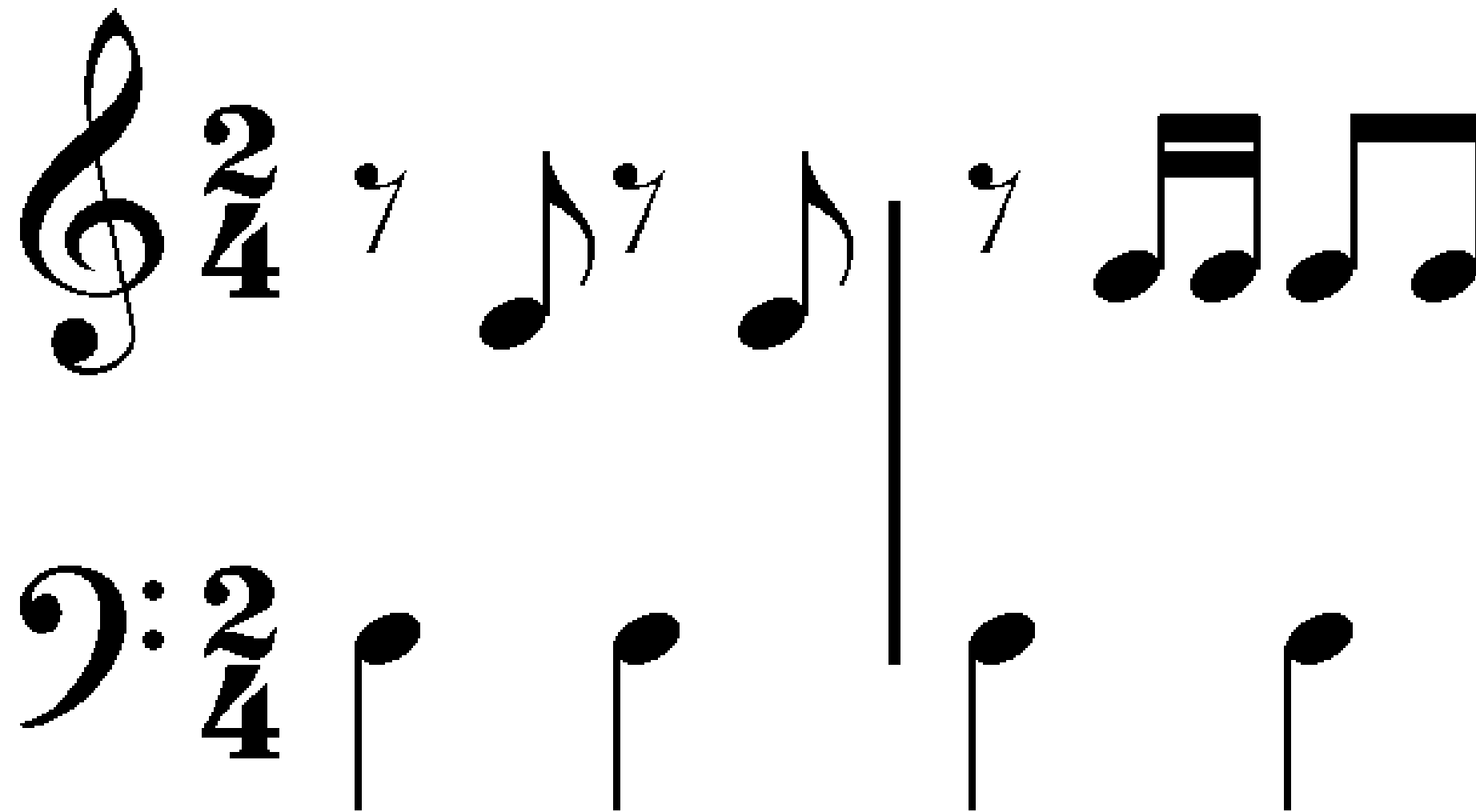
padrão 2

The image displays a musical score for 'Choro Sambado' in 2/4 time. It consists of two staves. The top staff uses a treble clef and contains four measures of music. The first measure has two eighth notes, the second has a dotted quarter note followed by an eighth note, the third has a quarter note with a grace note, and the fourth has a quarter note with a grace note. The bottom staff uses a bass clef and contains four measures, each with a single quarter note. Vertical bar lines separate the measures in both staves.

# VALSA



# POLCA





**/herculesgomesofficial**



**/herculesgomesofficial**



**/herculesgomesofficial**



**HERCULES GOMES**

[www.herculesgomes.com](http://www.herculesgomes.com)